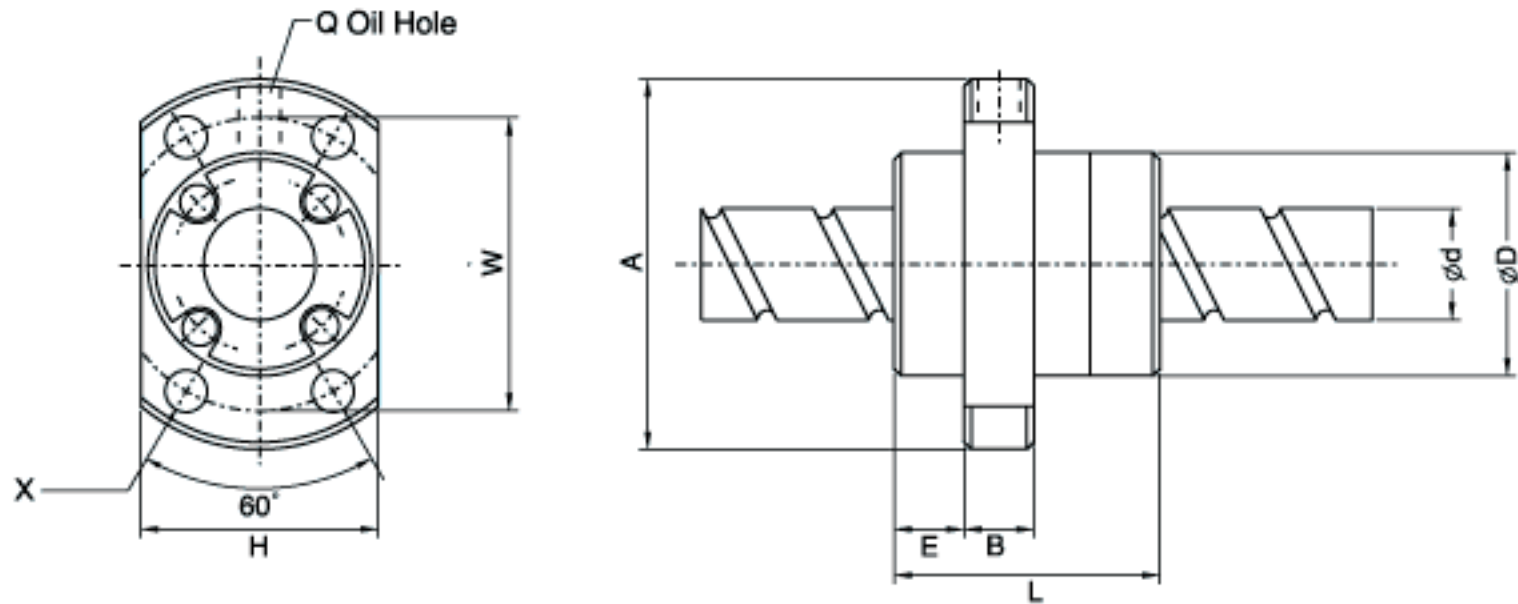


## Dimension Table of COMTOP Ball Screws

### TYPE : SFE



Unit : mm

I: Lead    Da: Ball Dia.    n: Number of Circuits    K: Stiffness (Kg/ $\mu$ m)  
 Ca: Basic Dynamic Rating Load (Kgf)    Coa: Basic Static Rating Load (Kgf)

Model No.	Dimensions													Ca	Coa	K
	d	l	Da	D	A	E	B	L	X	W	H	Q	n			
SFE1616-3	16	16	2.778	32	53	15	10	38	4.5	42	34	M6	1.7x2	650	1280	19
SFE1616-6		16	2.778	32	53	15	10	38	4.5	42	34	M6	1.7x4	1180	2550	36
SFE1632-3	16	32	3.175	34	55	10.5	10	34	5.5	45	36	M6	0.7x2	410	680	21
SFE1632-6		32	3.175	34	55	10.5	10	34	5.5	45	36	M6	0.7x4	820	1360	41
SFE2020-3	20	20	3.175	39	62	11.5	10	47	5.5	50	41	M6	1.7x2	980	2140	25
SFE2020-6		20	3.175	39	62	11.5	10	47	5.5	50	41	M6	1.7x4	1780	4280	49
SFE2040-3	20	40	3.175	38	58	11	10	41	5.5	48	40	M6	0.7x2	455	880	25
SFE2040-6		40	3.175	38	58	11	10	41	5.5	48	40	M6	0.7x4	910	1760	49
SFE2525-3	25	25	3.969	47	74	13	12	57	6.6	60	49	M6	1.7x2	1470	3350	31
SFE2525-6		25	3.969	47	74	13	12	57	6.6	60	49	M6	1.7x4	2660	6690	60
SFE2550-3	25	50	3.969	46	70	13	12	50	6.6	58	48	M6	0.7x2	685	1380	31
SFE2550-6		50	3.969	46	70	13	12	50	6.6	58	48	M6	0.7x4	1370	2760	60
SFE3232-3	32	32	4.762	58	92	16	12	71	9	74	60	M6	1.7x2	2140	5260	40
SFE3232-6		32	4.762	58	92	16	12	71	9	74	60	M6	1.7x4	3890	10500	76
SFE3264-3	32	64	4.762	58	92	15.5	12	62	9	74	60	M6	0.7x2	1000	2130	40
SFE3264-6		64	4.762	58	92	15.5	12	62	9	74	60	M6	0.7x4	2000	4260	77
SFE4040-3	40	40	6.350	73	114	19	15	89	11	93	75	M6	1.7x2	3410	8820	49
SFE4040-6		40	6.350	73	114	19	15	89	11	93	75	M6	1.7x4	6200	17600	95
SFE5050-3	50	50	7.938	90	135	21.5	20	107	14	112	92	M6	1.7x2	5100	13800	60
SFE5050-6		50	7.938	90	135	21.5	20	107	14	112	92	M6	1.7x4	7260	27600	117

Note: \*-3\* means 2 starts, \*-6\* means 4 starts.